

# Value engineering: *MAGIGLIDE*® Bi-fold closet door system vs. conventional door framing

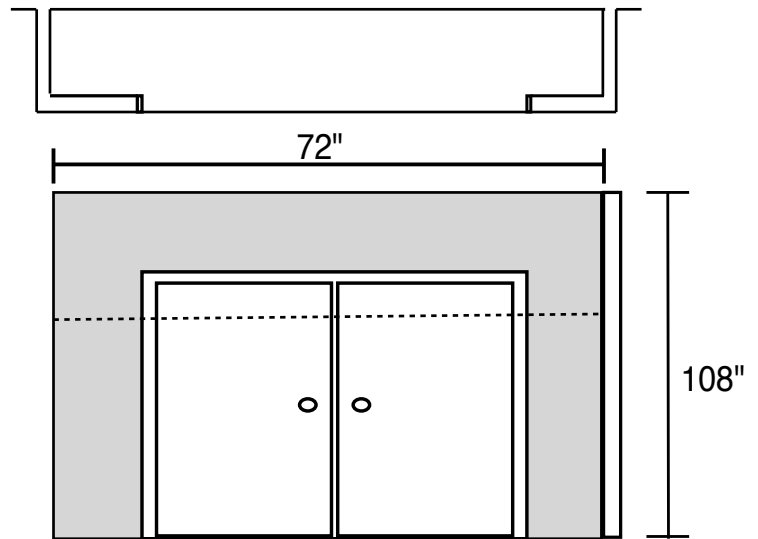
## 9' TALL OPENINGS

### Conventional closet door framing

Drywall installation is customarily estimated across the entire door opening when any furring may be required.

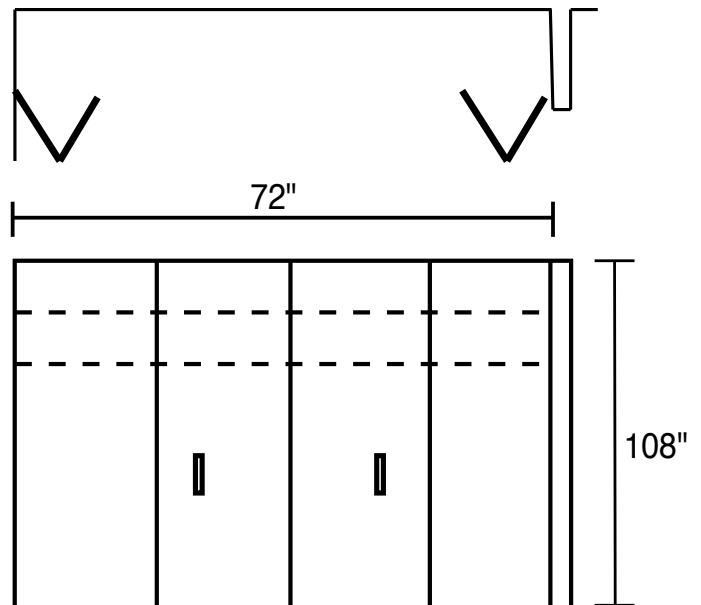
\*National average for framing installed = \$8.00

\*National average for drywall installed = \$1.50



19 sq. ft. framing @ 8.00	\$152.00
54 sq. ft. drywall @ 1.50	\$81.00
(2) 2'6" X 6'8" prehung h.c. door with hardware	\$270.00
<b>Typical total cost per closet opening using conventional methods</b>	
	<b>\$503.00</b>

### *MAGIGLIDE*® wall-to-wall, floor-to-ceiling bi-fold door system



Total cost per opening using primed <i>MAGIGLIDE</i> ® system 6'0" X 9'0"	\$220.00
---	----------

**Estimated Savings Per Opening Using *MAGIGLIDE*® System = \$283.00**

**NOTE:** Prices shown include freight within Continental U.S. and will vary with specific location.

All prices are approximate and are for relative cost comparison only. Actual prices may vary based on quantity, etc., and will be determined by specific requirements